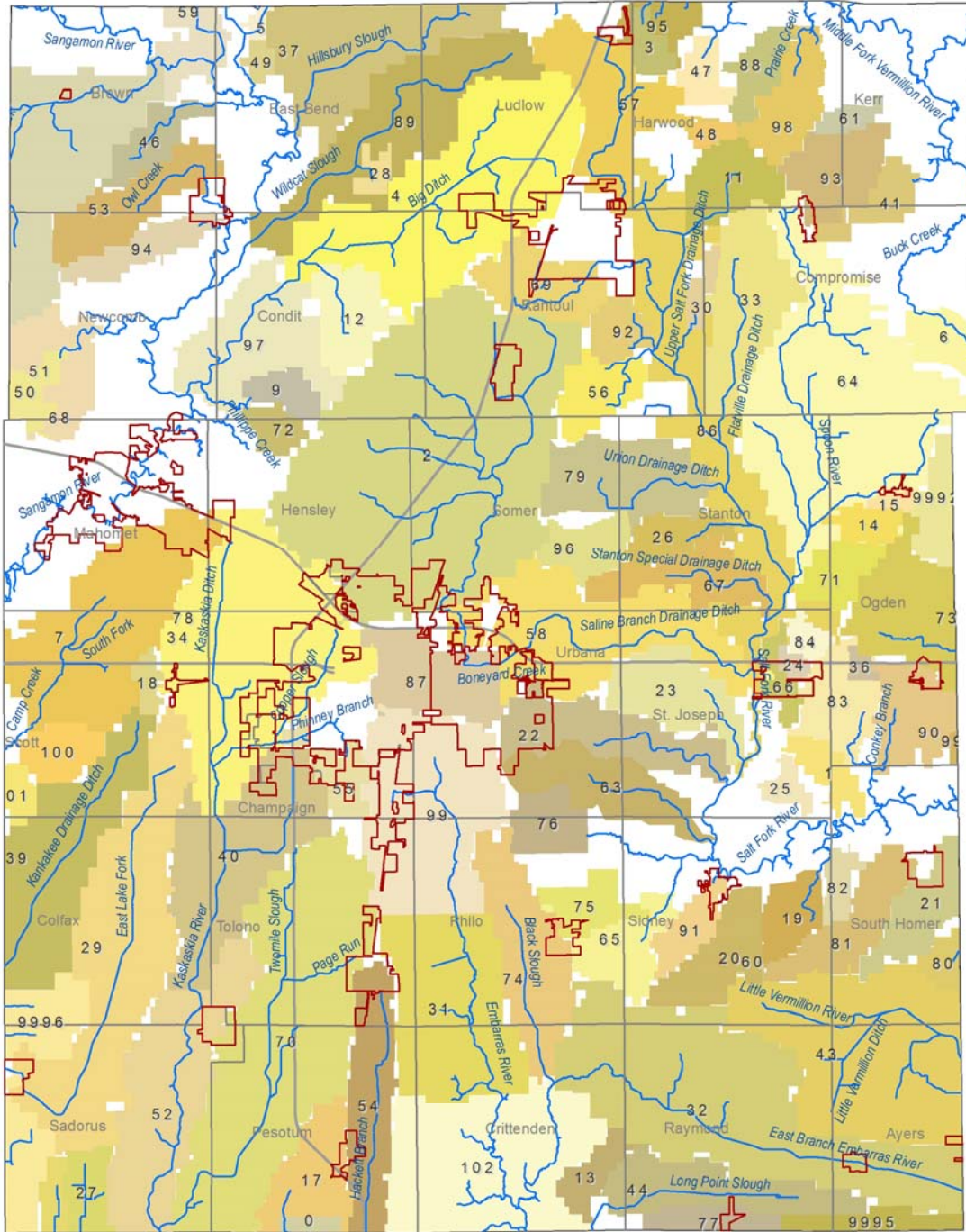


Figure 7-1: Drainage Districts



Drainage Districts

Champaign County

Legend

- Drainage District
- No Drainage District
- County Boundary
- Non-Intermittent Stream
- Civil Township
- Municipal Boundary



Table 7-1: Drainage Districts within Champaign County

Number in Figure 7-1	Drainage District	Number in Figure 7-1	Drainage District
1	Bailey Branch	56	Raup
2	Beaver Lake	57	Salt Fork
3	Big Tile Ditch Company	58	Saline Branch
4	Big Slough	59	Sangamon & Drummer
5	Blackford Slough	60	Schindler
6	Buck Creek Mutual	61	Schneider Mutual
7	Camp Creek Special	63	Silver Creek
8	Conkey Branch	64	Spoon River
9	Conrad Fisher	65	South Fork
11	Dillsburg Special	66	#6 St. Joseph Twp
12	#1 Condit	67	Stanton Special
13	Crittenden Twp. #1	68	Stover Mutual
14	#10 Ogden Township	69	Triple Fork
15	#11 Ogden Township	70	Two Mile Slough
17	Pesotum Consolidated	71	Union Stanton-Ogden Twp
18	#2 Town of Scott	72	Union #1 of Hensley and Condit
19	#1 Town of Sidney	73	#1 Ogden & Oakwood
20	#2 Sidney Township	74	#1 Philo & Crittenden
21	#1 Town of South Homer	75	Union #1 Philo & Sidney
22	St. Joseph Township #3	76	#1 Philo & Urbana
23	St. Joseph Twp. #4	77	Union #1 Raymond & Murdock
24	St. Joseph Twp #5	78	Union #1 Scott & Champaign
25	St. Joseph Twp #8	79	#2 Somer & Stanton
26	#1 Town of Stanton	80	Union #1 Homer & Sidell
27	Dry Fork Mutual	81	Union #2 South Homer & Sidney
28	East Bend Mutual	82	Union #3 South Homer & Sidney
29	East Lake Fork	83	#2 St. Joseph & Ogden
30	Ehmen-Schmidt Mutual	84	Union DD #7 St. Joe & Ogden
31	Embarras River Mutual	86	Upper Salt Fork
32	Embarras Special	87	Urbana-Champaign Sanitary
33	Flatville Special	88	West Branch
34	Fountain Head	89	Wildcat Special
36	Hickory Grove	90	Willow Branch
37	Hillsbury Slough Special	91	Wrisk
39	Kankakee	92	Youman's Branch Mutual
40	Kaskaskia Special	93	Harwood and Kerr
41	Kerr and Compromise	94	Willow Brook Special
42	Killbury Mutual	95	Ludlow Special
43	Little Vermilion	96	#1 Town of Somer
44	Long Point Slough	97	Lower Big Slough
45	Lotus Special	98	Prairie Creek
46	Nelson-Moore-Fairfield	99	Upper Embarras
47	Harwood Twp Mutual WC	100	#1 Town of Scott
48	Harwood Twp Mutual CS	101	East Camp Creek
49	Dickerson Slough	102	North Fork Embarras
50	Meyers Mutual	9991	Vermilion County #48
51	Newcomb Special	9992	Vermilion County #49
52	Okaw	9993	Douglas County #16
53	Owl Creek	9994	Douglas County #31
54	Pesotum Slough	9995	Douglas County #51
55	Phinney Branch Mutual	9996	Piatt County #15